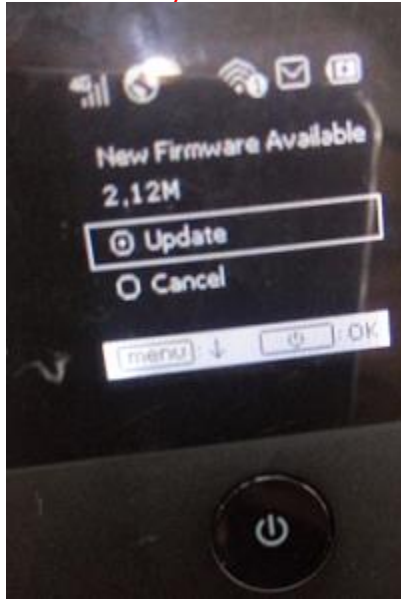


How do I upgrade the firmware of my M7350?

Suitable for: M7350

There are two methods to upgrade your M7350's firmware, please follow either one of them to upgrade your M7350.

Note: If this is your M7350 first boot in a week and your M7350's firmware version is not latest, there will be a firmware update message in the M7350's screen. (M7350 will automatically detect whether there is a latest firmware version in the cloud server every week)



Method 1: Local upgrading

Step 1

First please download the latest firmware of M7350 from our website. Here is the download link: <http://www.tp-link.com/en/products/details/?categoryid=&model=M7350#down>

Note: The firmware is a zipped file. Please don't unzip it. You will need the whole zipped file to upgrade your M7350.

Step 2

Please connect your computer to M7350 wirelessly or via USB cable (about how to access the M7350's Internet via USB cable, please refer to [FAQ 758](#)), then open the web browser and type the IP address of your M7350 (default is **192.168.0.1** or **http://tplinkmifi.net**) in the address bar. After that, please press Enter.



Step 3

Type the username and password in the login page (default username and password are both **admin**), and log into the management webpage of your M7350.

A screenshot of the TP-LINK M7350(UN) management webpage. The page has a blue header with the TP-LINK logo and the model name. Below the header, there is a "Status" section on the left and a login section on the right. The status section lists various network parameters, and the login section has input fields for username and password, along with a "Login" button.

Status	
Connection Status:	Connected
Network Type:	WCDMA
SSID:	TP-LINK_M7350_735292
Wireless Band:	2.4GHz
Current Clients:	2
Total Used:	87.91 MB

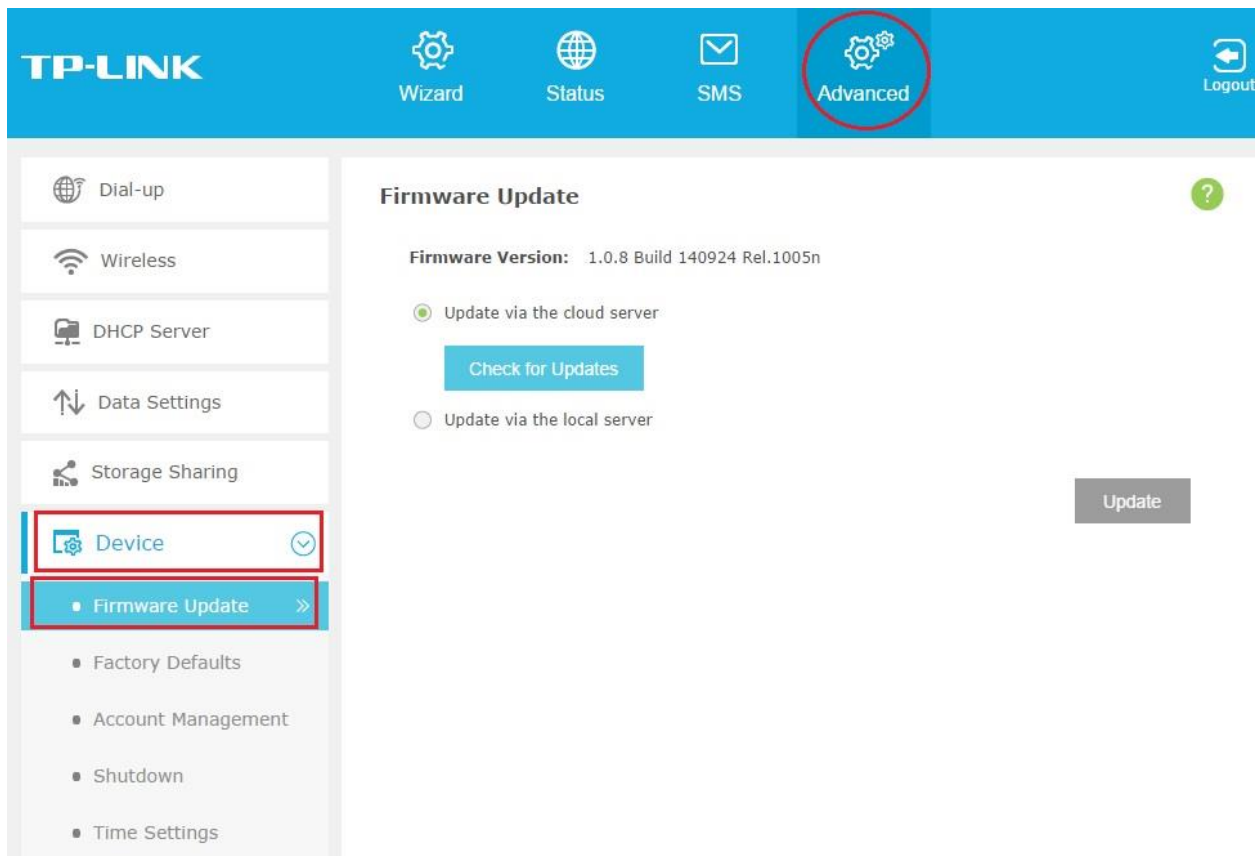
 admin



Login

Step 4

Select **Advanced—>Device—>Firmware Update**, and the webpage will show like below:



The image shows the TP-Link Advanced settings page for a router. The top navigation bar is blue with the TP-LINK logo and icons for Wizard, Status, SMS, Advanced (highlighted with a red circle), and Logout. The left sidebar contains a list of settings: Dial-up, Wireless, DHCP Server, Data Settings, Storage Sharing, Device (highlighted with a red box), Firmware Update (highlighted with a red box), Factory Defaults, Account Management, Shutdown, and Time Settings. The main content area is titled "Firmware Update" and shows the current "Firmware Version: 1.0.8 Build 140924 Rel.1005n". There are two radio button options: "Update via the cloud server" (selected) and "Update via the local server". A blue "Check for Updates" button is located below the cloud server option. A grey "Update" button is at the bottom right.

Step 5

Select "**Update via the local server**", and click **Browse**.

Firmware Update

Firmware Version: 1.0.8 Build 140924 Rel.1005n

☐ Update via the cloud server

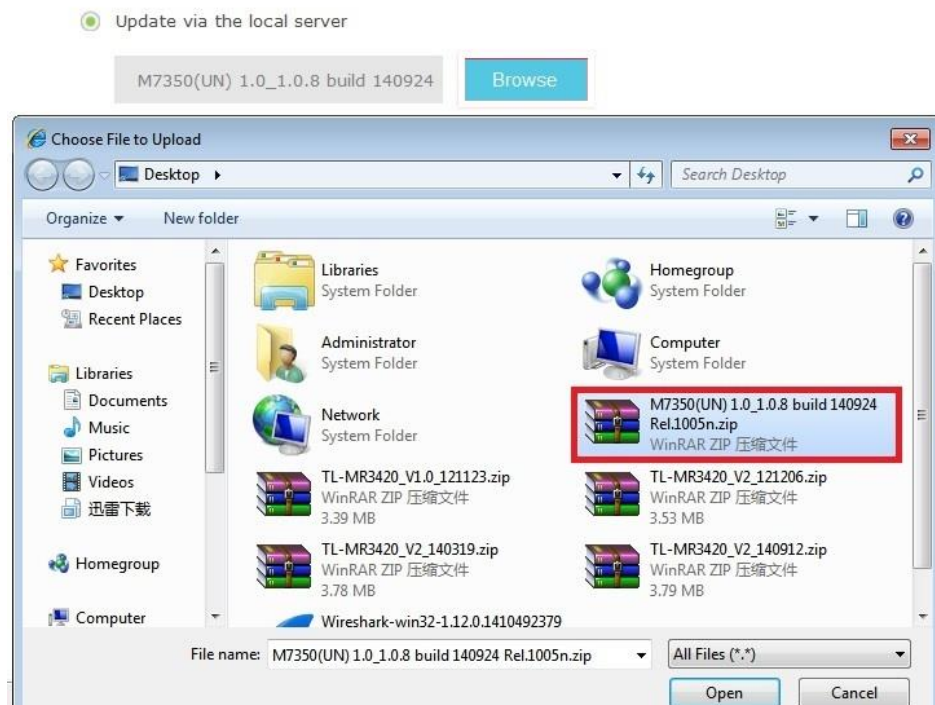
☒ Update via the local server

Browse

Update

Step 6

Select the zipped firmware file of M7350 you have just downloaded from TP-LINK website on your computer, and click **OK**.



Step 7

Click **Upgrade** button to update your M7350's firmware, please wait for a few minutes until upgrading process is completed, and M7350 will reboot automatically.



Method 2: Cloud upgrading

Step 1

Please connect your computer to M7350 wirelessly or via USB cable (about how to access the M7350's Internet via USB cable, please refer to [FAQ 758](#)), then open the web browser and type the IP address of your M7350 (default is **192.168.0.1** or **http://tplinkmifi.net**) into the address bar. After that, please press Enter.



Step 2

Type the username and password in the login page (default username and password are both **admin**), and log into the management webpage of your M7350.

A screenshot of the TP-LINK M7350(UN) management interface. The top header is blue with 'TP-LINK | M7350(UN)' in white. The main content area is divided into two sections. On the left, under the 'Status' heading, there is a table of network information. On the right, there is a login form with fields for username and password, and a 'Login' button.

Status	
Connection Status:	Connected
Network Type:	WCDMA
SSID:	TP-LINK_M7350_735292
Wireless Band:	2.4GHz
Current Clients:	2
Total Used:	87.91 MB

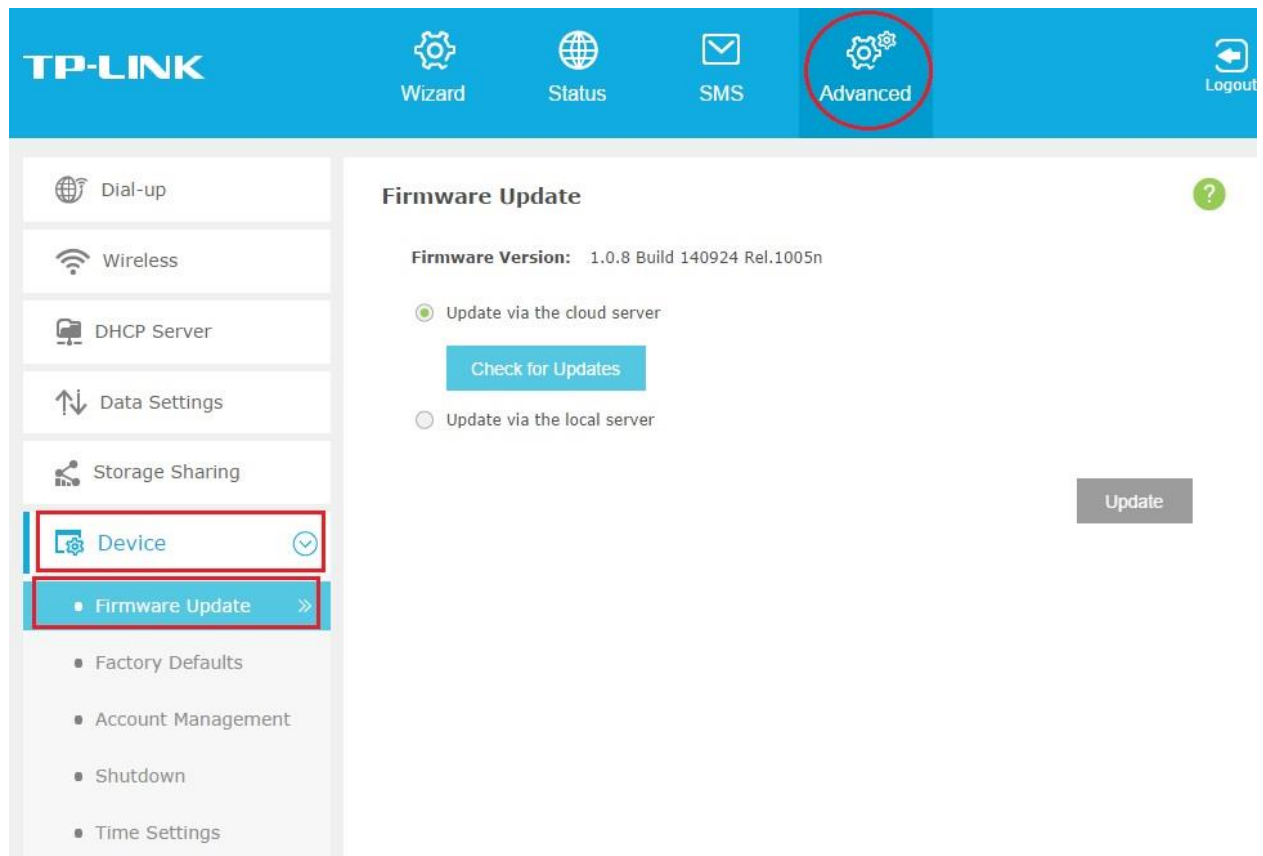
admin

.....

Login

Step 3

Select **Advanced—>Device—>Firmware Update**, and the webpage will show like below:



Step 4

Select "**Update via the cloud server**".

1. If this is your M7350's first boot in a week, you can see the latest firmware version message directly.

Firmware Update



Firmware Version: 1.0.10 Build 141015 Rel.1009n

☒ Update via the cloud server

Check for Updates

New Version: [1.0.11](#) (2.12MB) [Release Note](#)

☐ Update via the local server

Update

2. If there isn't the latest firmware version message, please click **Check for Updates**.

Firmware Update



Firmware Version: 1.0.8 Build 140924 Rel.1005n

☒ Update via the cloud server

Check for Updates

☐ Update via the local server

Update

Note: Please ensure that your device can access the Internet at this time.

If your M7350's firmware is already the latest, there will be following indication message "**Your current firmware is up to date**". If not, you can find the latest firmware version message, it will show under the "**Check for Updates**" button.

☒ Update via the cloud server

Check for Updates

Your current firmware is up to date.

Step 5

Move your mouse to the New Version and click it, it will download the latest firmware package, then you can choose local upgrading. **(Optional)**



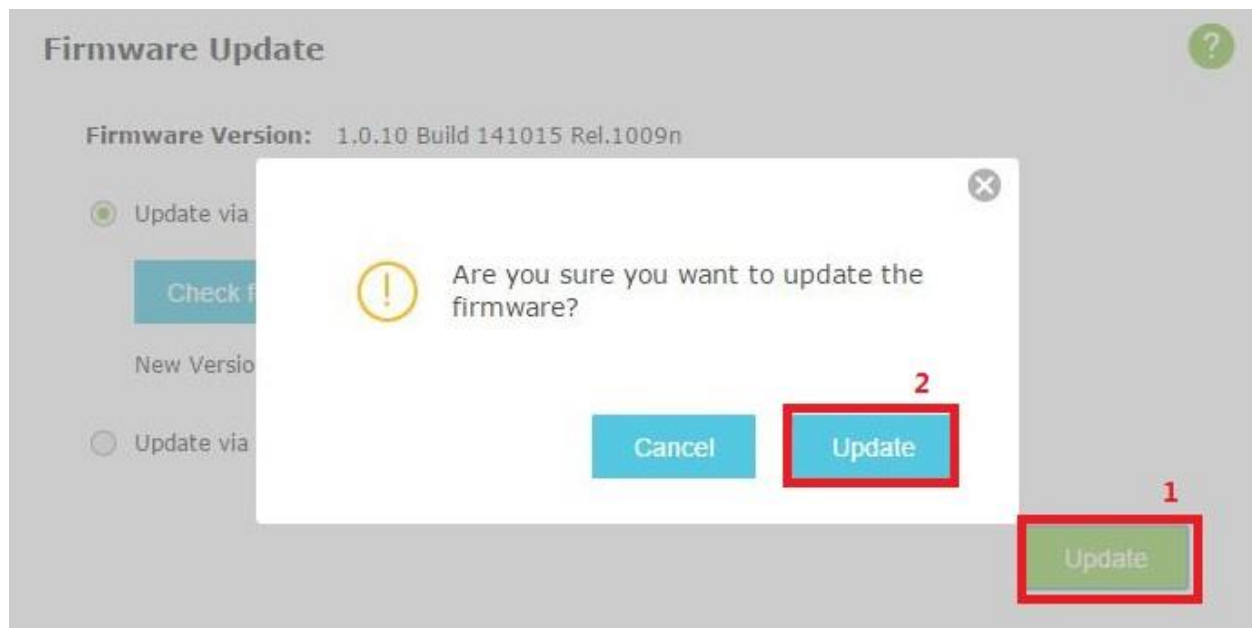
Move your mouse to the Release Note and click it, you can see all the release notes in this firmware.



Note: Here is just a sample of Release note.

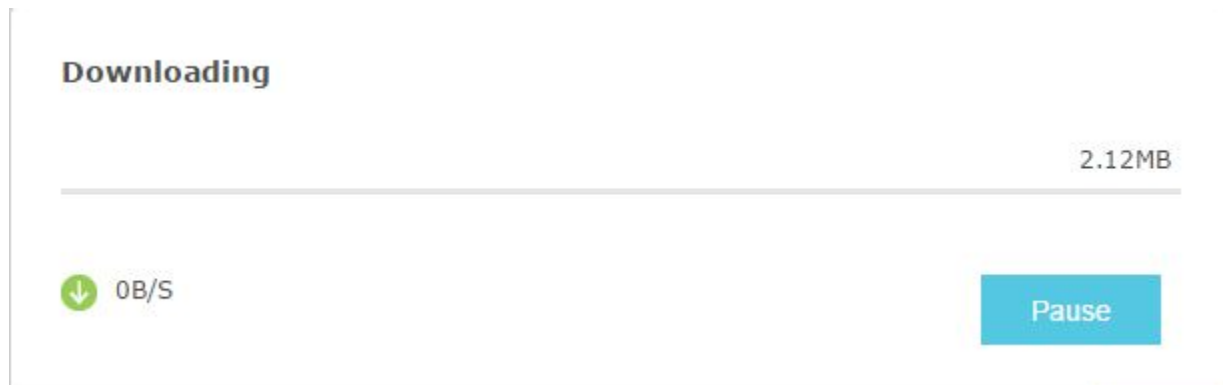
Step 6

Click **Upgrade** button to update your M7350's firmware.



It will download the latest firmware from the cloud server firstly.

Note: You can pause download anytime, when you update it again, it will remember your download history and continue to download from the historical record.



When the download is complete, it will automatically begin update, please wait for a few minutes until upgrading process is completed, and M7350 will reboot automatically.

